



Piddle Valley Neighbourhood Plan

*Help make the
Vision
for our future*

Newsletter 10

To all residents and friends of the Piddle Valley

Planning rules are changing - nationally and locally. A new draft version of the West Dorset, Weymouth and Portland Local Plan, is about to be adopted. (These are the guidelines upon which planning officers make their decisions and can be found on the Dorset for you website.) There is a lot of press coverage about the national shortage of housing. The Government is 'relaxing' planning in order to encourage building, and this is being reflected locally. No longer will villages be discouraged as housing sites and development will be concentrated on sites with good transport facilities around main roads and railway lines.

So what can a village do if it wants to protect views or areas from development? Define those areas in a Neighbourhood Plan that if accepted will become part of local planning law. But to be credible and to pass scrutiny we have to provide housing somewhere in the Valley. Where should we build? We all know the answer to that - 'anywhere but next door to me'.

Over the past months people have suggested sites within the Valley that may be appropriate for new housing. We have collated these suggestions and the plans are now open for all of you to comment on. They appear on the following pages and we need you to tell us what you think, especially if you are in favour of any of the identified sites. These are not definitive, they are a first draft; it is fine if you want to object to a site but please don't stop there, suggest an alternative. In the autumn we will be holding separate meetings in each of the five villages so that we can receive further specific feedback, after all it is the residents of their village that should decide where in their village is developed and what is preserved. .



The Neighbourhood Planning Group is made up of people who eighteen months ago volunteered to take the project on, many of whom come from Piddletrenthide and Plush. We need fresh ideas and more help, especially from the other villages. So if you are interested in playing a more active role then please get in touch.

Paul Johns, Working Group Chairman
telephone 01300 348154

email suevasha@aol.com / npchair@piddlevalley.info

Housing - both for open market and low cost for local people

led by Malcolm Johnston mjz@btinternet.com / 01300 34869

During the summer months the Housing Group has been concentrating on telling people about our proposals for planned housing development in the Valley over the lifetime of the Neighbourhood Plan. Our emphasis continues to be identifying sites for Local housing with some 50 across the Valley appearing to be possible at this stage.

We have been showing maps at the village fetes and asking for comment and ideas. At the Alton Pancras Fete on May 24th the map showed the whole Valley with the proposed village boundaries marked. These boundaries will allow the Plan to have policies for housing and other building development inside and outside villages. As a result of comments received the positions of some boundaries were changed.

At the Piddletrenthide Fete on 22nd June the map showed the boundaries and also the sites within the villages, which we have identified as having the potential for new housing during the 15 year life of the Plan. Comments were generally favourable and led to discussions that were valuable in improving our knowledge of the Valley.

At Piddlehinton fete on 19th July we showed the same map and again received helpful and informative comments. Some residents were unhappy about what they saw and eight emails were subsequently sent and to which I responded on behalf of the Housing Group, explaining our thinking and clarifying some misunderstandings. We will be holding an informal meeting with those involved to discuss the sites further.

At the Gardens Club Show on 16th August the maps initiated generally supportive discussion with one concerned comment recorded.

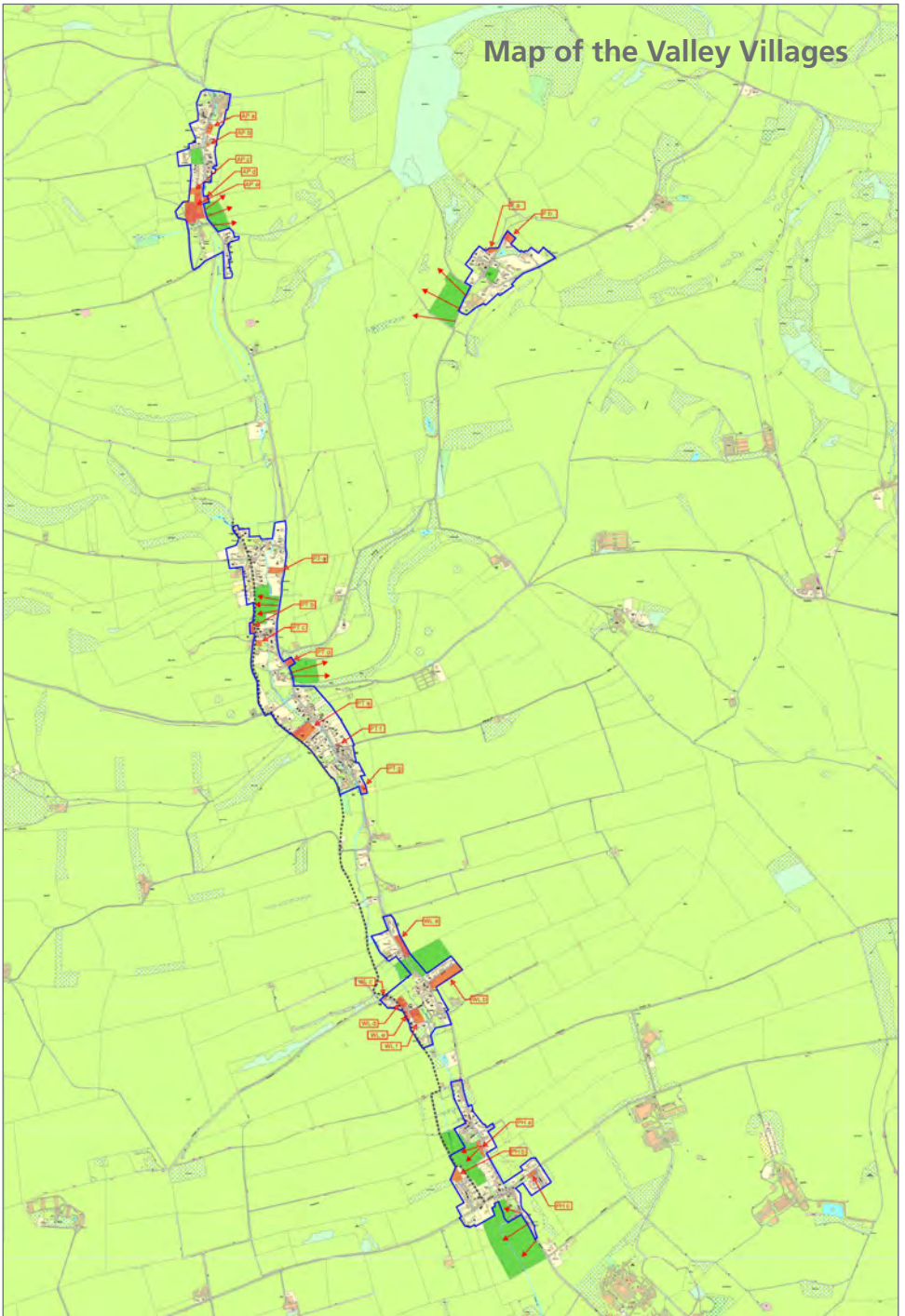
The maps are reproduced on the following pages.

This legend explains the symbols etc that we have used on the maps. Opposite is a view of the whole Valley. The enlarged maps of each village are then shown at the same scale.

If you wish to see the maps online please go to www.piddlevalley.info

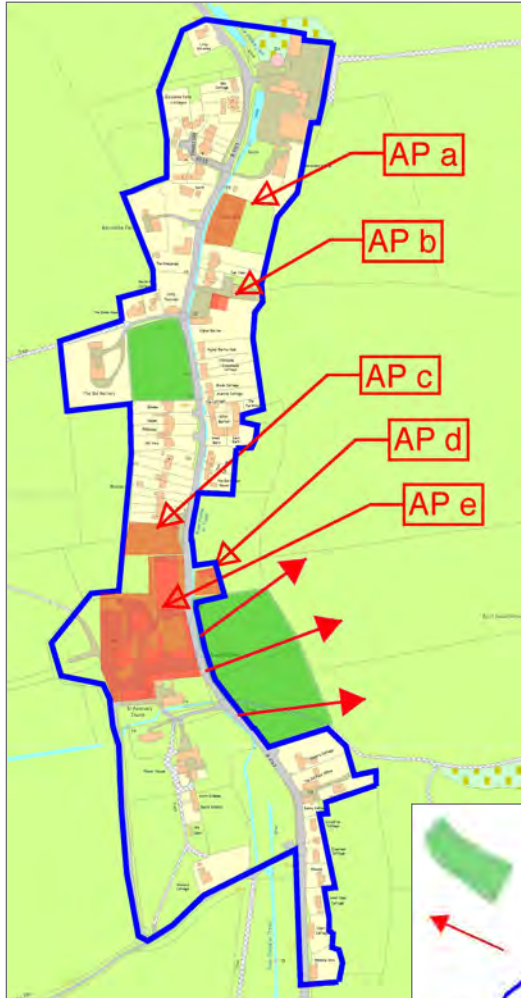


Map of the Valley Villages

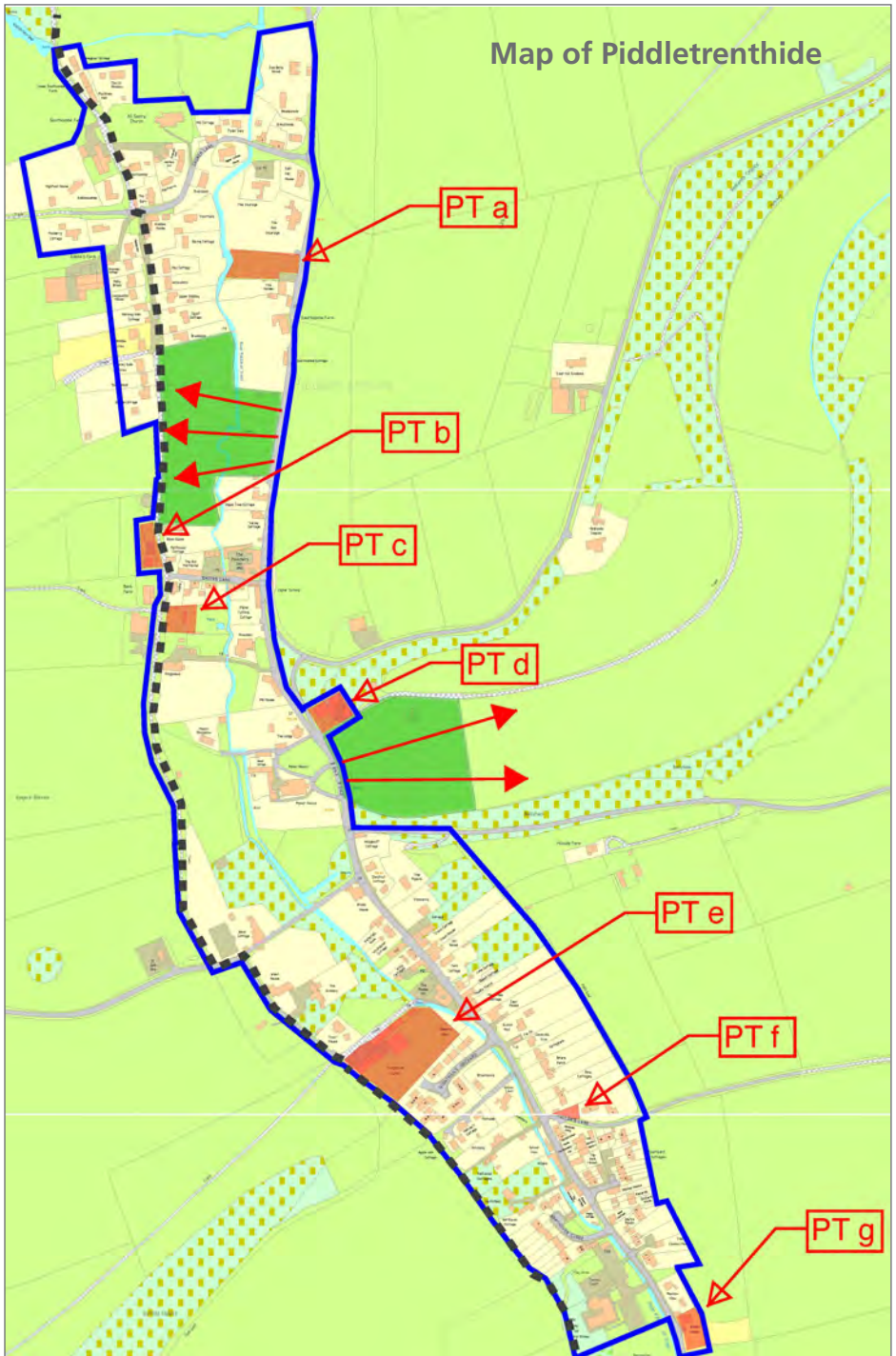


Piddle Valley Neighbourhood Plan

Map of Alton Pancras

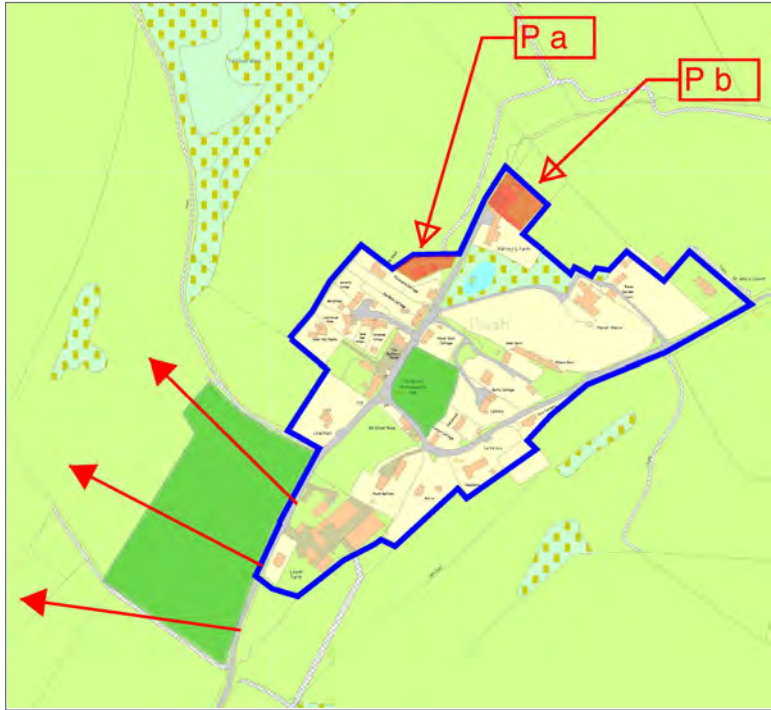


Map of Piddletrenthide

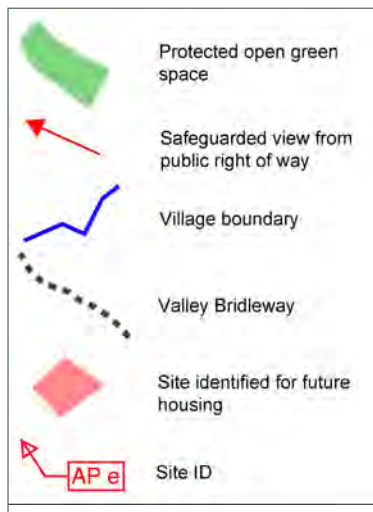
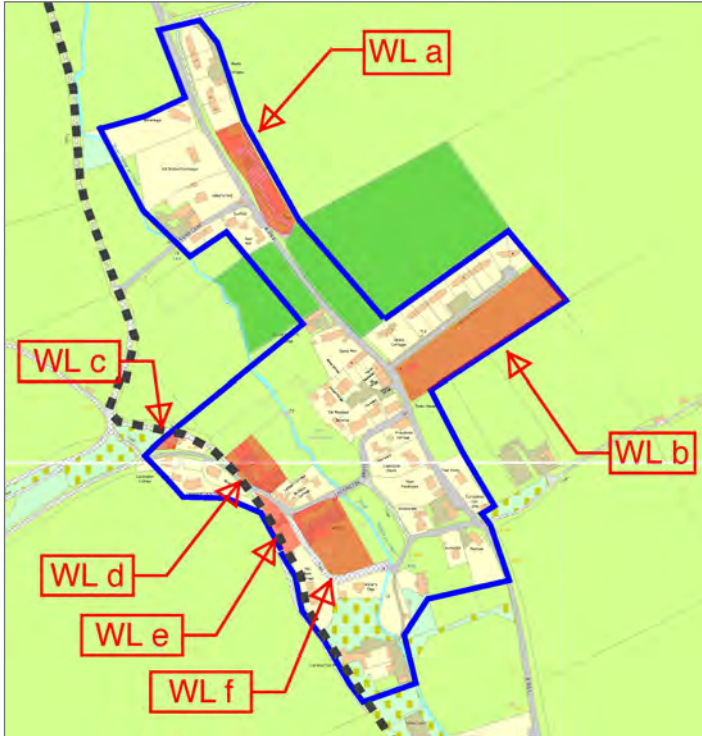


Piddle Valley Neighbourhood Plan

Map of Plush



Map of White Lackington



Map of Piddlehinton

